

Types of Trees to Plant in Urban Areas of Arizona

Trees that are fit to grow in cities, such as Phoenix or Tucson are native mesquites or Palo Verdes, to name a few.

This is due to the fact that these two types of trees only reach heights of up to around 30 feet, so they would not take up too much space in the city. Afghan and Aleppo pines also do well in Arizona, and typically reach heights of around 50 feet. These trees are indigenous in Afghanistan or Syria, meaning they thrive in similar climates.

If a smaller tree is preferred, trees like desert orchids or mastic olives will do the trick. Native trees are better to plant because they can easily adjust to the climate. They serve as wildlife habitats for the native wildlife and are more resistant to pests that may be harmful to the vegetation.



Urban Forestry to Resolve Climate Injustice

The correlation between urban forestry and heat resilience in the Central Phoenix area.

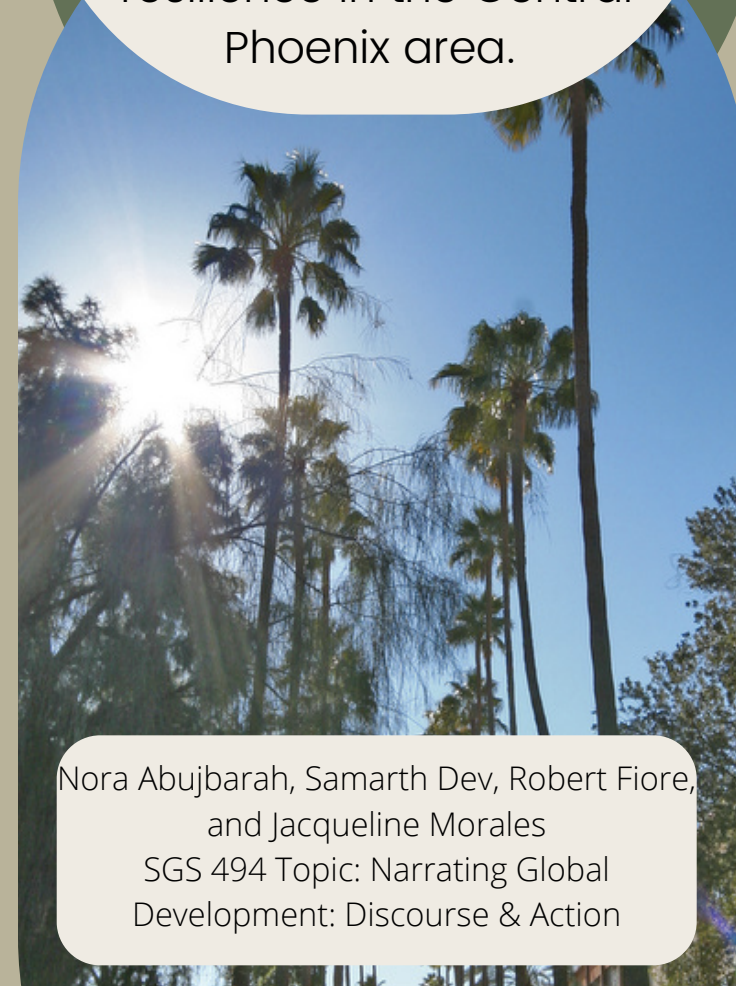
Native Trees Best Suited for Central Phoenix based on environmental Impact

TREES NATIVE TO ARIZONA
(BELOW 4,500 FEET)

- Velvet mesquite
- Screwbean mesquite
- Desert ironwood
- Cat claw acacia
- Whitethorn acacia
- Net leaf hackberry
- Foothills palo verde
- Blue palo verde
- Desert willow



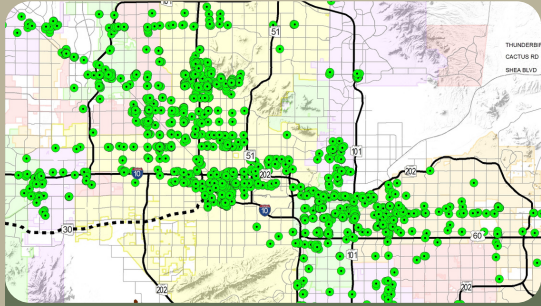
Map of Central Phoenix



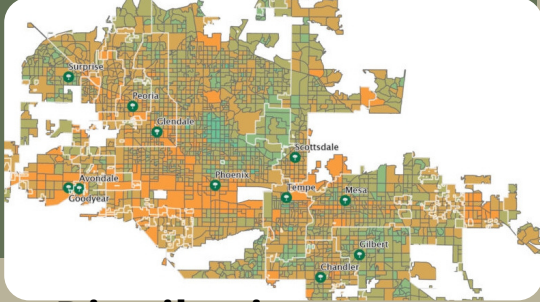
Nora Abujbarah, Samarth Dev, Robert Fiore,
and Jacqueline Morales
SGS 494 Topic: Narrating Global
Development: Discourse & Action

Climate Injustice in Central Phoenix and Surrounding Areas

Correlation between tree equity and homeless population



Homelessness Distribution

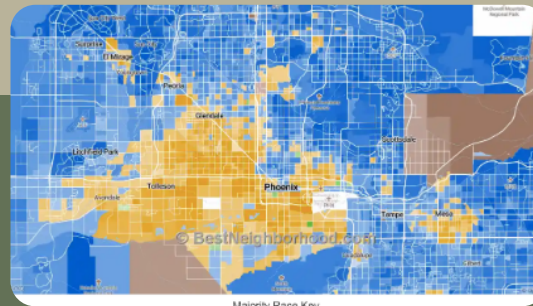


Arbor Distribution

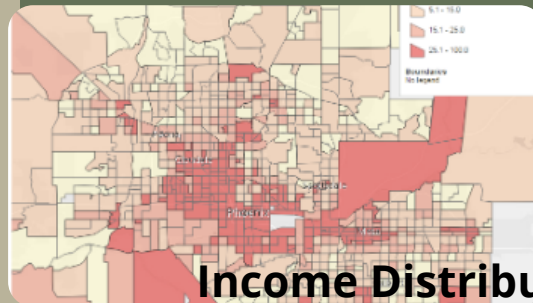
According to Arizona tree equity and homeless maps, there is correlation between areas with high homeless populations and low tree coverage. Locations that are highly populated by homeless individuals tend to have low tree equity. Trees need to be planted in such locations to provide shade for this vulnerable population and to decrease temperatures.

Central Phoenix Demographics most Affected by Climate Change

The areas with the largest percentages of homelessness, poverty, and minority residency are also the areas surrounded by increased vehicle emissions, rising and extreme heat, and tree scarcity. With the knowledge that native arbor is an effective means of reducing the effects of climate change and rising heat, urban forestry is the most effective solution to climate injustice in Arizona.



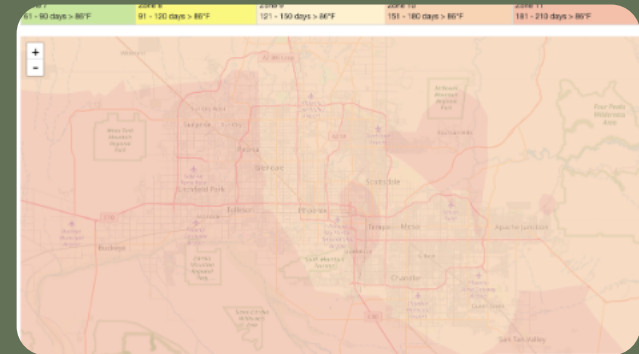
Race Distribution



Income Distribution

Effects of More Trees

Urban forestry is the best environmental and economic solution to Arizona's rising heat. Through photosynthesis, Trees can absorb and store carbon dioxide keeping the environment significantly cooler than other environments neighboring the region. Therefore, the absence of trees causes an area to become to become warmer. Forest loss and damage is the cause of 10% of global warming, leading scientists to conclude that forests are an essential part of the solution to fight the current climate crisis.



Map of Average Temperatures in the Central Phoenix area